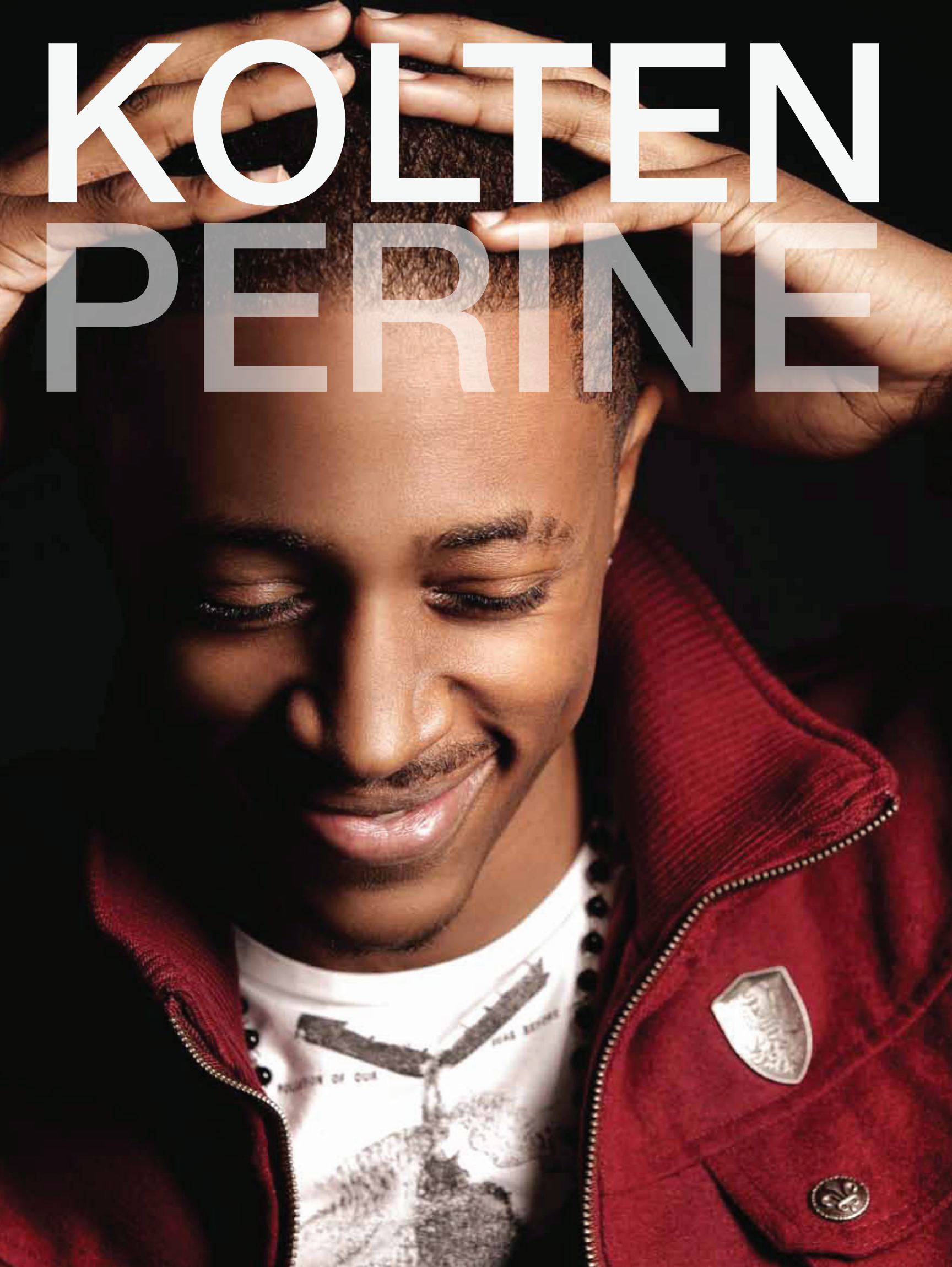


KOLTEN PERINE





KOLTEN PERINE

December 16, 1992-

American R&B singer, and musician hailing from Hattiesburg, MS.

KOLTEN musical talents were evident at a young age. He received his very first drum set as a gift from his parents on his 4th birthday. Kolten's gifts were further cultivated when he began winning in local talent shows. He moved to Dallas, TX in 2000 where he attended T.A. Howard Middle and displayed a different talent, his athleticism; Leading and excelling on the school's baseball and basketball teams. He loves sports and his favorite athletes are Amar'e Stoudemire, Kobe Bryant and Hines Ward. His charm, natural ability and charisma would later land him a leading role in the school play Annie.

He has a legacy of great musicians and singers on both his mother and father's side. The keyboard, piano, drums, bass, lead and acoustic guitar are amongst the many instruments Kolten has picked up. His musical repertoire also extends to lead and background vocals, music arrangement, songwriting, producing, and creative dance.

His musical inspiration comes from great artist such as Michael Jackson, Usher, Prince, Ne'Yo, Chris Brown, Mario and Trey'Sonz. However, Kolten spends most of his time being creative and focusing on his own originality. He has had the support, development, and management by KnA Management.

His love for music shows as his gift continues to grow. Kolten has a great future ahead of him and will capture the music and entertainment industry by storm.

KOLTEN PERINE

PRESS

Rated R&B: Rated Next

<http://ratedrnb.com/2011/10/10/rated-next-artist-kolten-perine/>

Rated R&B writes about Kolten singing in Korean Covering over seas artist Big Bang.

<http://ratedrnb.com/2012/04/16/watch-kolten-perine-covers-korean-pop-group-big-bangs-bad-boy/>

Kolten Perine-GMG Artist of the Month May-2012/G.M.G Network

<http://gmgnetwork.org/kolten-perine-gmg-artist-of-the-month-may-2012.html>

Grammy U-Spotlight

<http://www.grammy365.com/blogs/washington-dc-grammy-u-spotlight-layal-brown>

SOCIAL SITES





ARTIST MANAGEMENT

knamanagement.com

PO BOX 86 Mclean VA 22101

Anna Lee / Kenny Darby

kna@knamanagement.com